



*Environments is a series of sample libraries inspired by our research in sound environments and the relationship of sound and space.*

Environments "Temple of Mercury" features sound gestures from a corrugated plastic pipe and the impulse response of the Temple of Mercury, situated in a wide caldera near the west of Naples (Italy). The Temple is also known as "The Echo Temple" for its several acoustic reflections caused by a dome vault and water on the floor. The temple is entirely made of tophus, and it has a diameter of 21.5 meters (71ft) and a circular opening in the vault reminiscent of the one in the Pantheon in Rome. The sampled instrument produces flute, horn, efxs, impulsive sounds, and, with a little electroacoustic modification, feedback sounds; all sounds are playable with or without the convolution of the Temple. This library was inspired by a video by Salvatore Carannante, a musician who plays common or recycled everyday objects as a way of interacting with the acoustic space.

## **Specifications**

- 24 MachFive Programs (.M5p)
- 5 MachFive Multis (.m5m)
- 3 Round Robin samples
- Up to 3 velocity layers
- 87 Samples (44.1kHz / 24Bit)
- 1 Impulse Response
- Formats: MachFive and WAV
- Sample sets including:  
flute, horn, efxs, impulsive sounds, feedback sounds,  
sound designed instruments

## Installation

Once the *AudioThing\_Environments\_Temple\_of\_Mercury.rar* file is downloaded, unzip it using WinRar or UnRarX or a similar type of software. It is recommended that you preserve the internal folder structure, but you can also place the instruments and samples into separate folders. Motu MachFive 3.1.3 or higher is required to run the instrument.

## Overview



### Reverb

*On/Off* – Enable/disable the Convolution Reverb

*Wet* – Amount of Reverb output

### Envelope

*Attack* – Attack time of the Volume envelope

*Release* – Release time of the Volume envelope

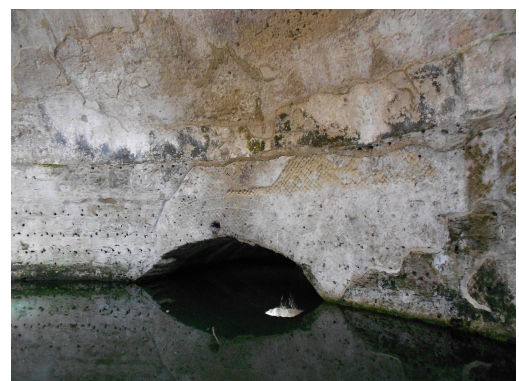


### Credits

Idea and Samples by *Salvatore Carannante*

Script and GUI by *Carlo Castellano*

Produced by *AudioThing*



## License

The license of this product is granted only to a single user for how many computers he/she has. All sounds and samples in this product are licensed, but not sold, to you by AudioThing for commercial and non-commercial use in music, sound-effect, audio/video post-production, performance, broadcast or similar content creation and production.

This license expressly forbids any unauthorized use of the content of this library or any AudioThing library by another sample instrument or loop, samples or SFX library of any kind, without our express written consent.

## Thank You

Thank you for buying Environments - Temple of Mercury! We hope you will have as much fun using this product as we had making it.

For help or any question, feel free to mail us: [info@audiothing.net](mailto:info@audiothing.net)

