



# SR-88

## USER GUIDE

v1.5

|                           |          |
|---------------------------|----------|
| <b>SR-88.....</b>         | <b>3</b> |
| INSTALLATION.....         | 3        |
| REGISTRATION.....         | 4        |
| <b>PARAMETERS.....</b>    | <b>5</b> |
| MAIN.....                 | 5        |
| SEQUENCER.....            | 5        |
| <b>FEATURES.....</b>      | <b>7</b> |
| PARAMETER LOCK.....       | 7        |
| EDIT VALUE.....           | 7        |
| GLOBAL SETTINGS.....      | 7        |
| FILTER.....               | 8        |
| <b>END.....</b>           | <b>9</b> |
| WHERE IS EVERYTHING?..... | 9        |
| CREDITS.....              | 9        |
| EULA.....                 | 9        |
| THANK YOU.....            | 9        |

# SR-88

**SR-88** is a sample-based plugin emulation of the *Sound Master Memory Rhythm SR-88*, a rare analog drum machine from the 80s.

The instrument features 5 classic analog sounds: Kick, Snare, Hi Hat 1, Hi Hat 2, and Cymbal, which can be pitched, panned or mixed independently.

You can additionally shape the sounds with the Low Pass Filter (Zero Delay Feedback), Overdrive, Compressor and Reverb.

The sequencer lets you easily build patterns that can be dragged and dropped to your DAW/host.

## INSTALLATION

### MAC OS

- Double click on the DMG archive to extract it
- Right click on the PKG installer and click open
- Follow the instructions to install the plug-in(s)

### WINDOWS

- Extract the ZIP archive
- Double click on the setup file (.exe)
- Follow the instructions to install the plug-in(s)

## REGISTRATION

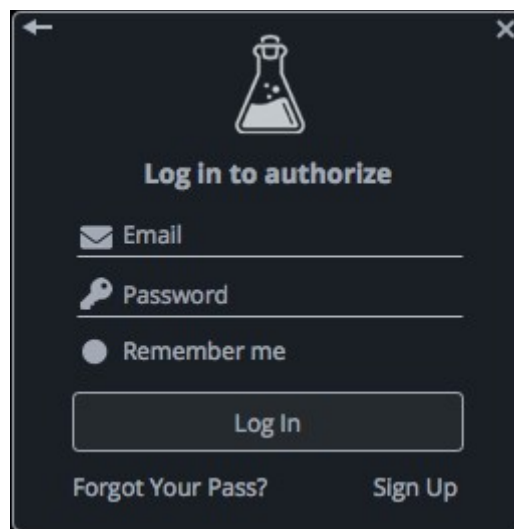
In demo mode the plug-in will output silence for 3 seconds every 45 seconds, and you won't be able to save presets.

You can open the registration window by clicking on the ☰ icon next to the bypass button, in the top-right corner.

You can choose between *Online* and *Offline* authorization.

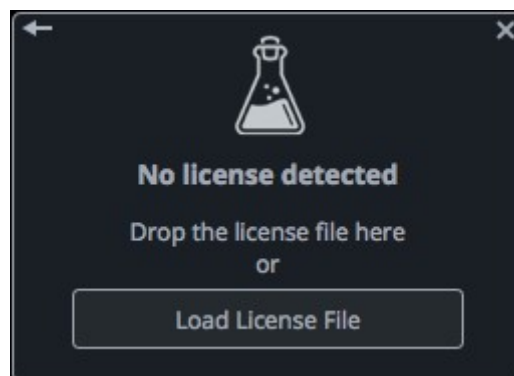
## ONLINE

- If you haven't created an account yet, you can [signup here](#) using the same email address used at check out.
- Just input your credentials into the text fields and click on Log In



## OFFLINE

- Download the license file from [your account](#).
- Copy the file to your offline computer.
- Just drag and drop the license into the registration window or click on the *Load License File* button and browse to the downloaded license.



# PARAMETERS

## MAIN

### For each Channel

|               |   |
|---------------|---|
| <i>Pan</i>    | Controls the balance of the sound from left to right                      |
| <i>Decay</i>  | Controls the decay time of the sound                                      |
| <i>Pitch</i>  | Controls the pitch (and the speed) of the sound from -24 to +24 semitones |
| <i>Volume</i> | Controls the volume of the channel  |

### Filter

|                  |  |
|------------------|--|
| <i>Cutoff</i>    | Controls the frequency of the low pass filter          |
| <i>Resonance</i> | Controls the resonance/emphasis of the low pass filter |

### Effects

|                    |  |
|--------------------|--|
| <i>Drive</i>       | Controls the amount of the overdrive wet signal    |
| <i>Reverb</i>      | Controls the amount of the plate reverb wet signal |
| <i>Compressor</i>  | Controls the amount of compression to apply        |
| <i>Master Gain</i> | Controls the volume of the entire instrument       |

## SEQUENCER

The sequencer can be played in three different ways. By default the sequencer will start when your DAW/host is playing (or recording). When you enable the *Start/Stop with Keys*, the sequencer will only start when the selected keys are pressed (default C4 and D4). Alternatively you can also just click on the Play button.

The *Power* button enables or disables the sequencer entirely.

The *Play* button turns on when the sequencer starts (or can be used to start it).



The *Patterns* menu lets you load/save, copy/paste, or even randomize the patterns.

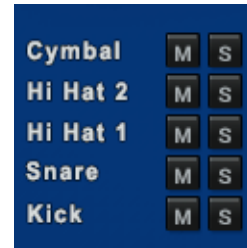


The *Tempo* menu allows you to change the speed of the Sequencer.

You can drag and drop the pattern to your DAW as a MIDI region/file by clicking on the *Pattern* button. The sequencer will be automatically powered off, so be carefull in live situations.

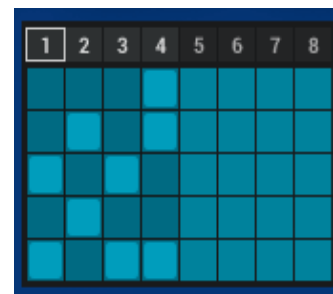


You can choose to mute or solo each individual channel using the *M* and *S* buttons.



You can build your patterns by clicking (or dragging) the blue squares.

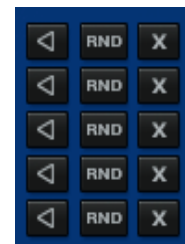
You can also choose the amount of steps for the Sequencer by clicking (or dragging) on the numbers at the top.



The first button lets you randomize the corresponding track at every sequencer cycle.

The *RND* button lets you randomize the track every time you press it.

The *X* button erases all the track steps.

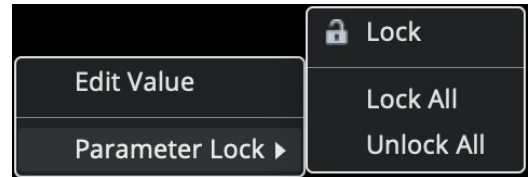


# FEATURES

## PARAMETER LOCK

If you want to keep the value of one or more parameters while changing presets, or when using the randomizer button, you can use the Parameter Lock feature.

Right click on a parameter and choose *Parameter Lock*.



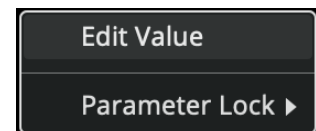
*Lock/Unlock* If locked, the parameter won't be updated when changing presets


*Lock All* No parameters will be updated

*Unlock All* All parameters will be updated

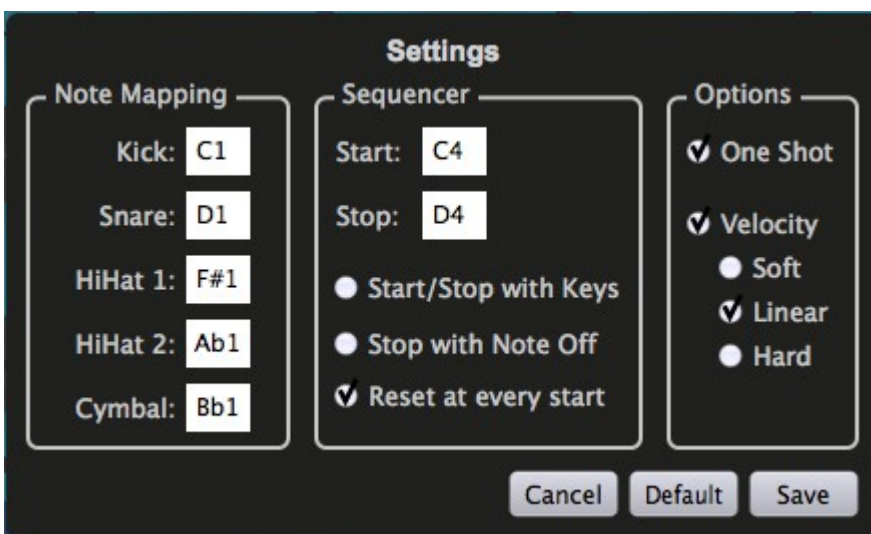
## EDIT VALUE

You can also manually change the value for knobs and sliders. Right click on a parameter and choose *Edit Value*. You can also access this feature with a SHIFT + Click.



By clicking on the  icon you can access additional features.

## GLOBAL SETTINGS



To access the global settings, click on the *More* button and then *Settings*.

You can change the note mapping for each sound, and also for the Start and Stop keys.

If *Start/Stop with Keys* is selected the Sequencer will only start or stop when the selected keys are pressed.

If *Stop with Note Off* is selected, the sequencer will also stop when the Start key is released.

When *Reset at every start* is selected, the sequencer will always re-start from the first step.

If *One Shot* is enabled, the instrument will play the sound until the end, without stopping the envelope

When *Velocity* is enabled, the instrument will respond to MIDI velocity. You can also choose between three velocity curves (soft, linear, hard).

## **FILTER**

The filter is a 12dB/oct Low Pass filter with Zero Delay Feedback. You can choose to disable it by clicking on the *More* button and then deselect *Filter*.



# END

## WHERE IS EVERYTHING?

The installer will place the plugins, presets and other data in these folders.

### MAC OS

AU: */Library/Audio/Plug-ins/Components/*  
VST: */Library/Audio/Plug-ins/VST/*  
VST3: */Library/Audio/Plug-ins/VST3/*  
AAX: */Library/Application Support/Avid/Audio/Plug-Ins/*  
Data: */Users/Shared/AudioThing/*

### WINDOWS

VST: *custom path from installer*  
VST3: *\Program Files\Common Files\VST3\*  
AAX: *\Program Files\Common Files\Avid\Audio\Plug-Ins\*  
Data: *\Users\Public\Public Documents\AudioThing\*

### CREDITS

DSP & Code: Carlo Castellano  
Design: John Gordon (vstyler)

### EULA

Please visit [www.audiothing.net/eula/](http://www.audiothing.net/eula/) to review this product EULA.

### THANK YOU

Thank you for your purchase! We hope you will have as much fun using it as we had making this product.

For help or any question, feel free to contact us here: [www.audiothing.net/contact/](http://www.audiothing.net/contact/)

